


PTUmedical
Implants & Instruments

Product Catalogue



 100% MADE
IN GERMANY

About ptu medical GmbH

We are a leading supplier for medical technology companies in the fields of traumatology and orthopaedics

Certified Quality at the Highest Level – 100% Made in Germany

In the field of traumatology and orthopaedics we manufacture a wide variety of products, including bone plates, screws, bone drills and countersinks, surgical instruments, screwdrivers and drill guides.

As a responsible supplier we guarantee a constant high-quality and prove this by a certification according to DIN EN ISO 13485:2016. We are FDA registered.



**100% MADE
IN GERMANY**

Modern CNC-Machinery and Production Technology

Our large pool of CNC machine has been especially designed for the manufacture of medical products. Thanks to our state-of-the-art production technology, we can offer you the highest quality products at extremely competitive conditions.

Our machinery includes:

- ▶ Swiss-Type CNC-Machines (up to \varnothing 38 mm)
- ▶ CNC 5-axis Milling Machining Centres
- ▶ CNC 5-axis Grinding Machines

We look forward to new challenges

If we have aroused your interest, we look forward to working with you.



Index

Drill Bits.....	3
Taps.....	4
Countersinks.....	5
Screwdrivers.....	6
Handles with Quick Coupling.....	7

Drill Guides.....	8
Depth Gauges.....	9
Dynamic Hip Instruments.....	10



Drill Bits



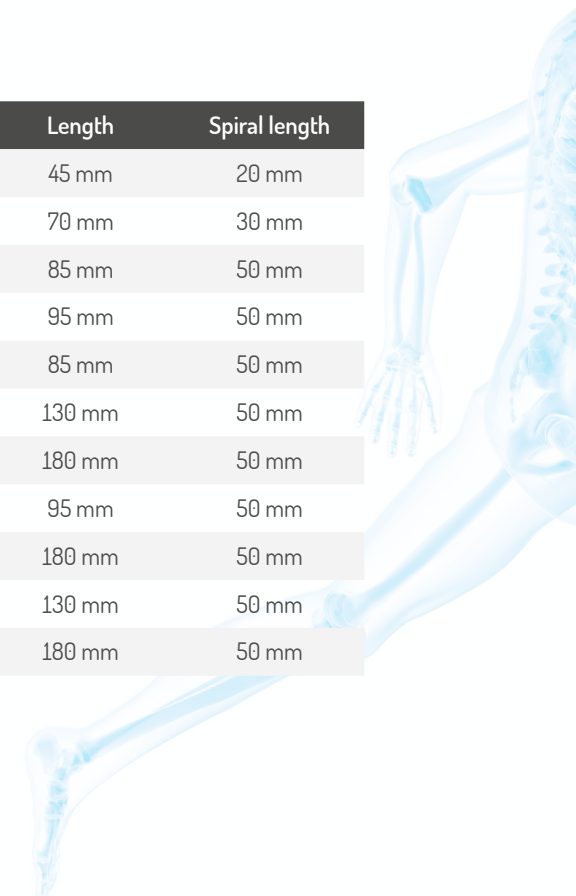
Quick coupling

Item-No.	Diameter	Length	Spiral length
T1-0002	ø 1.1 mm	60 mm	20 mm
T1-0004	ø 1.5 mm	85 mm	30 mm
T1-0006	ø 2.0 mm	100 mm	50 mm
T1-0008	ø 2.5 mm	110 mm	50 mm
T1-0010	ø 2.7 mm	100 mm	50 mm
T1-0012	ø 3.2 mm	145 mm	50 mm
T1-0014	ø 3.2 mm	195 mm	50 mm
T1-0016	ø 3.5 mm	110 mm	50 mm
T1-0018	ø 3.5 mm	195 mm	50 mm
T1-0020	ø 4.5 mm	120 mm	50 mm



Round shaft

Item-No.	Diameter	Length	Spiral length
T1-0024	ø 1.1 mm	45 mm	20 mm
T1-0026	ø 1.5 mm	70 mm	30 mm
T1-0028	ø 2.0 mm	85 mm	50 mm
T1-0030	ø 2.5 mm	95 mm	50 mm
T1-0032	ø 2.7 mm	85 mm	50 mm
T1-0034	ø 3.2 mm	130 mm	50 mm
T1-0036	ø 3.2 mm	180 mm	50 mm
T1-0038	ø 3.5 mm	95 mm	50 mm
T1-0040	ø 3.5 mm	180 mm	50 mm
T1-0042	ø 4.5 mm	130 mm	50 mm
T1-0044	ø 4.5 mm	180 mm	50 mm



Taps



Dental coupling

Item-No.	Diameter	Length
T1-0150	ø 1.0 mm	50 mm
T1-0152	ø 2.0 mm	53 mm



Quick coupling

Item-No.	Diameter	Length
T1-0154	ø 2.7 mm	100 mm
T1-0156	ø 3.5 mm	110 mm
T1-0158	ø 3.5 mm	110 mm
T1-0159	ø 4.0 mm	110 mm
T1-0160	ø 4.5 mm	130 mm
T1-0162	ø 4.5 mm	130 mm
T1-0162	ø 6.5 mm	200 mm

Countersinks



Dental coupling

Item-No.	Diameter
T1-0290	ø 1.5 / ø 2.0 mm



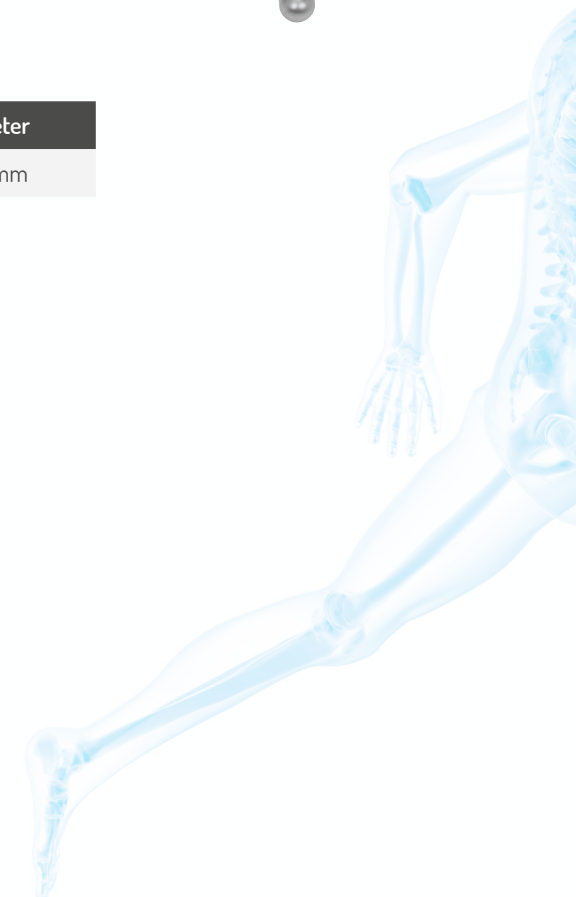
Quick-Coupling

Artikel-Nr.	Diameter
T1-0292	ø 2.7 / ø 3.5 / ø 4.0 mm
T1-0294	ø 4.5 mm



T-handle

Item-No.	Diameter
T1-0296	ø 4.5 mm



Screwdrivers



Screwdriver, hexagonal

Item-No.	Hex size
T1-0630	1.5 mm
T1-0632	2.5 mm



Screwdriver, hexagonal, with groove

Item-No.	Hex size
T1-0634	3.5 mm



Canulated

Item-No.	Hex size	Canulated
T1-0700	2.5 mm	ø 1.4 mm
T1-0702	3.5 mm	ø 1.8 mm



Screwdriver with holding sleeve

Item-No.	Hex size
T1-06301	1.5 mm
T1-06321	2.5 mm



Holding sleeve

Item-No.	Size
T1-0770	1.5 mm
T1-0772	2.7mm



Holding sleeve

Item-No.	Size
T1-0771	for 3.5 / 4.0 mm screws
T1-0774	for 4.5 / 6.5 mm screws



Screwdriver shaft

Item-No.	Hex size	Connection
T1-0740	1.5 mm	Dental
T1-0742	2.5 mm	Quick coupling
T1-0744	3.5 mm	Quick coupling

Handles with Quick Coupling



Handle with quick coupling

Item-No.

T1-0850



Handle with dental coupling

Item-No.

T1-0852



T-handle with quick coupling

Item-No.

T1-0848



Handle with dental coupling

Item-No.

T1-0852-1

Drill Guides



Drill guide straight

Item-No.	Inside diameter
T1-0398	ø 1.5 / ø 2.0 mm
T1-0400	ø 1.1 / ø 1.5 mm
T1-0402	ø 2.5 / ø 3.5 mm
T1-0403	ø 2.7 / ø 2.0 mm
T1-0404	ø 2.7 / ø 1.0 mm
T1-0408	ø 3.2 / ø 6.5 mm



Drill guide neutral and load

Item-No.	Inside diameter
T1-0436	ø 3.5 mm
T1-0438	ø 4.5 mm



Drill guide curved

Item-No.	Inside diameter
T1-0406	ø 3.2 / ø 4.5 mm



Universal drill guide

Item-No.	Inside diameter
T1-0416	ø 2.5 / ø 3.5 mm



Triple drill guide

Item-No.	Inside diameter
T1-0414	ø 2.0 mm



Universal drill guide, curved

Item-No.	Inside diameter
T1-0418	ø 3.2 / ø 4.5 mm

Depth Gauges



Depth gauge

Item-No.	Measuring range	Version
T1-0340	40 mm	for mini fragment screws
T1-0342	80 mm	for fragment screws
T1-0344	110 mm	for large fragment screws



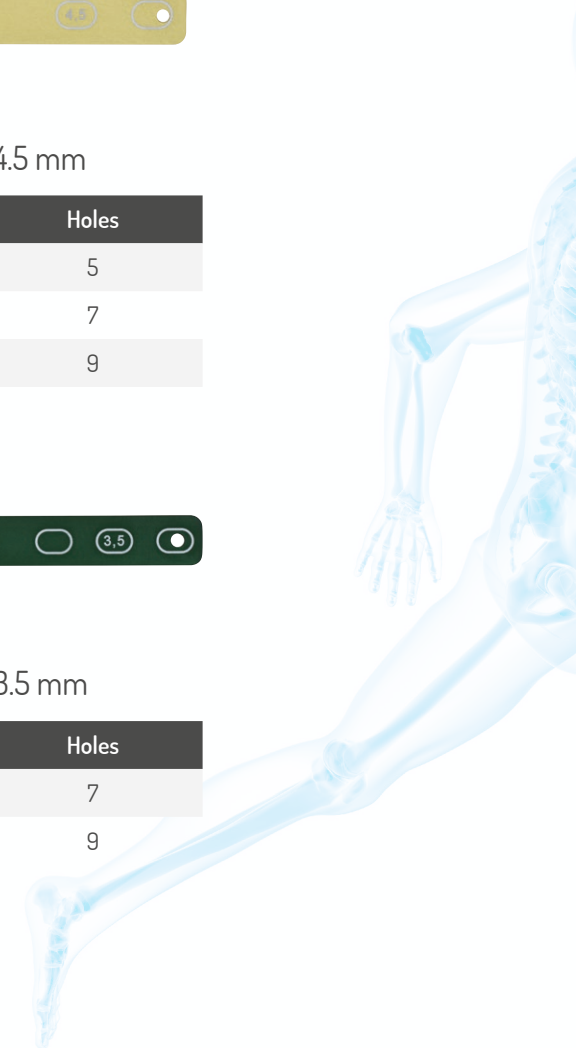
Bending template 4.5 mm

Item-No.	Holes
T1-0500	5
T1-0502	7
T1-0504	9



Bending template 3.5 mm

Item-No.	Holes
T1-0503	7
T1-0508	9



Dynamic Hip Instruments



Triple reamer for dynamic condylar plates

Item-No.

T1-0918



Triple reamer for dynamic hip plates

Item-No.

T1-0920



Tap for dynamic hip plates

Item-No.

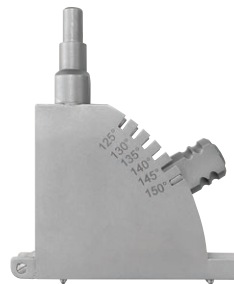
T1-0924



Impactor for dynamic hip plates

Item-No.

T1-0926



Drill guide adjustable 125° to 150°

Item-No.

T1-0928



Guide shaft

Item-No.

T1-0932

Dynamic Hip Instruments



Guide sleeve, short

Item-No.

T1-0934



Guide sleeve, long

Item-No.

T1-0936



Measuring gauge

Item-No.

T1-0942



Coupling screw, short

Item-No.

T1-0938



Wrench for dynamic hip screw

Item-No.

T1-0944



T-handle for T1-0924, -28

Item-No.

T1-0946



Coupling screw, long

Item-No.

T1-0940

Pedicle Screws and Instruments



Bone Drills and Countersinks



Thread Taps



Instruments





PTUmedical
Implants & Instruments

ptu-medical GmbH
Hermann-Winker-Str. 7
D - 78549 Spaichingen

Phone +49 7424 60937-0
info@ptu-medical.com

as of 03/2022

ptu-medical.com